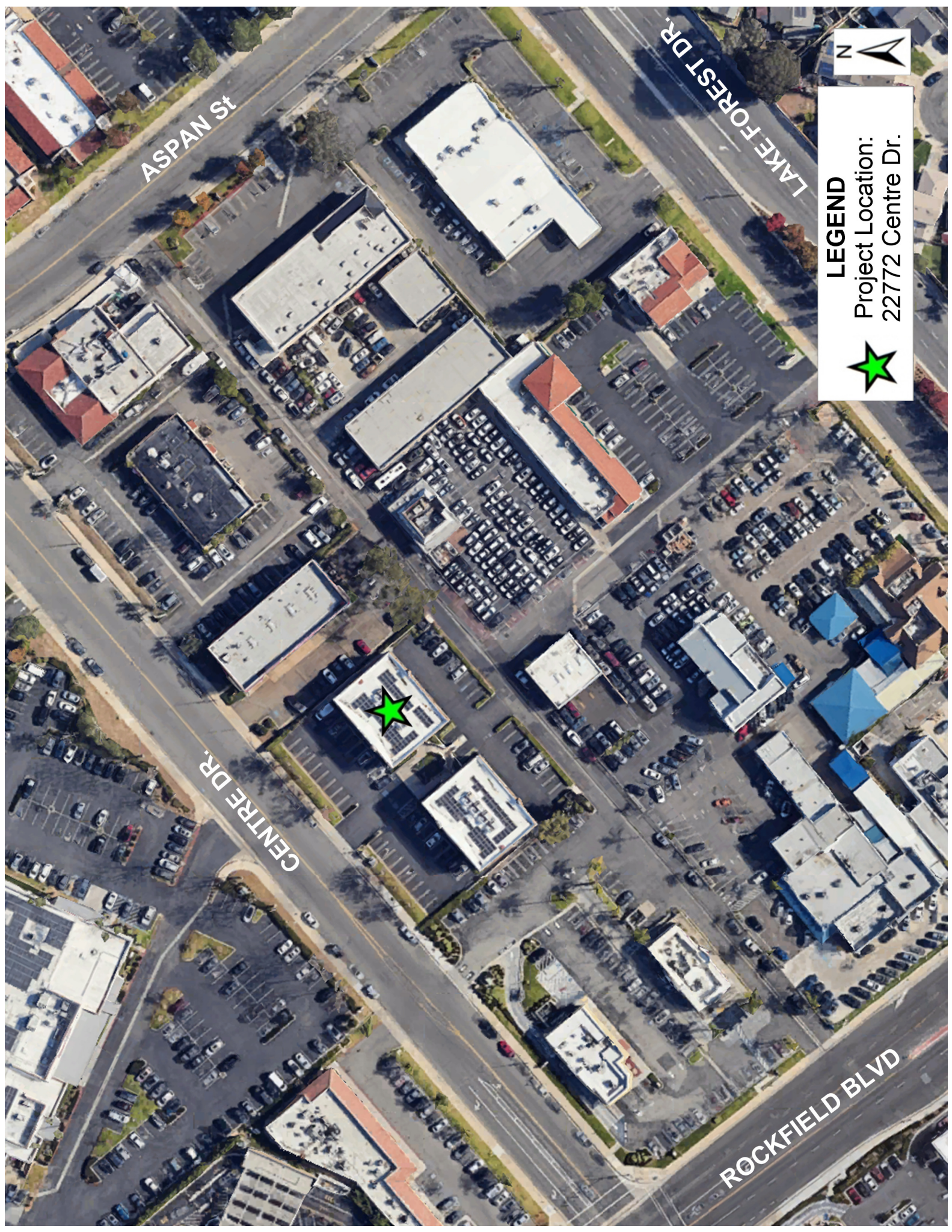


PC Attachment 4



LEGEND

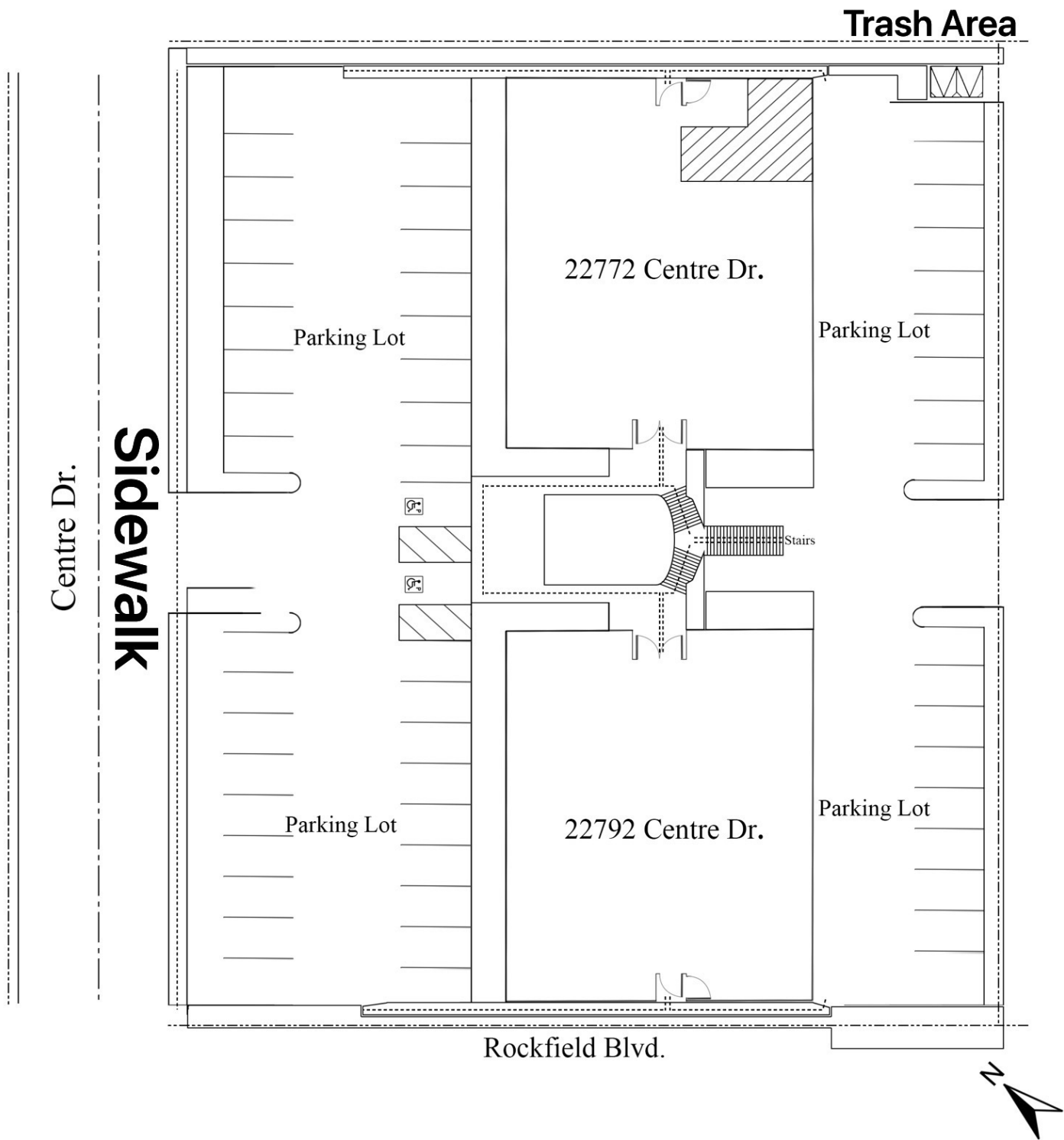
Project Location:
22772 Centre Dr.



SITE PLAN

Tappan Investments (CA) LLC

22772 Centre Drive
Lake Forest, CA 92630

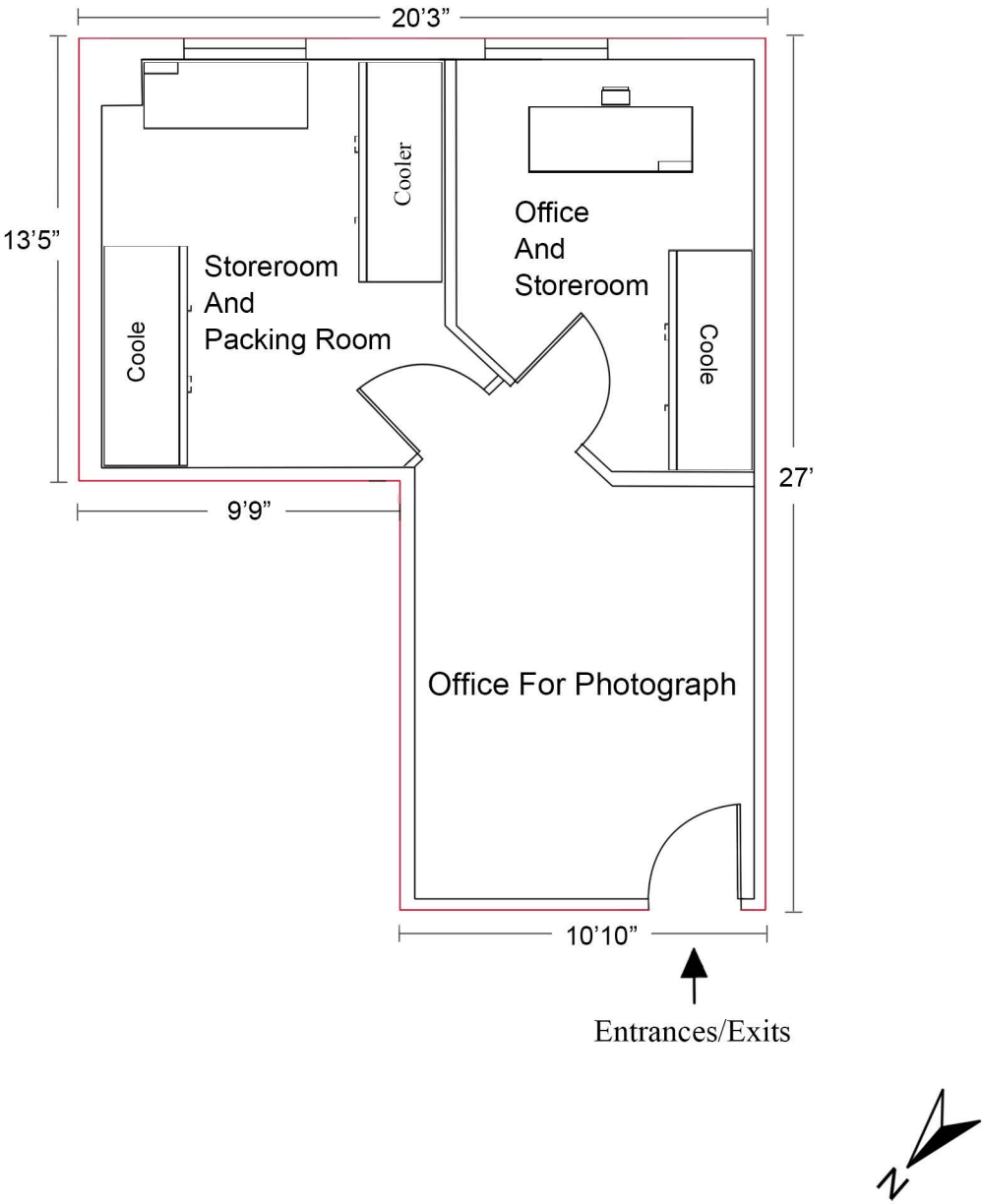


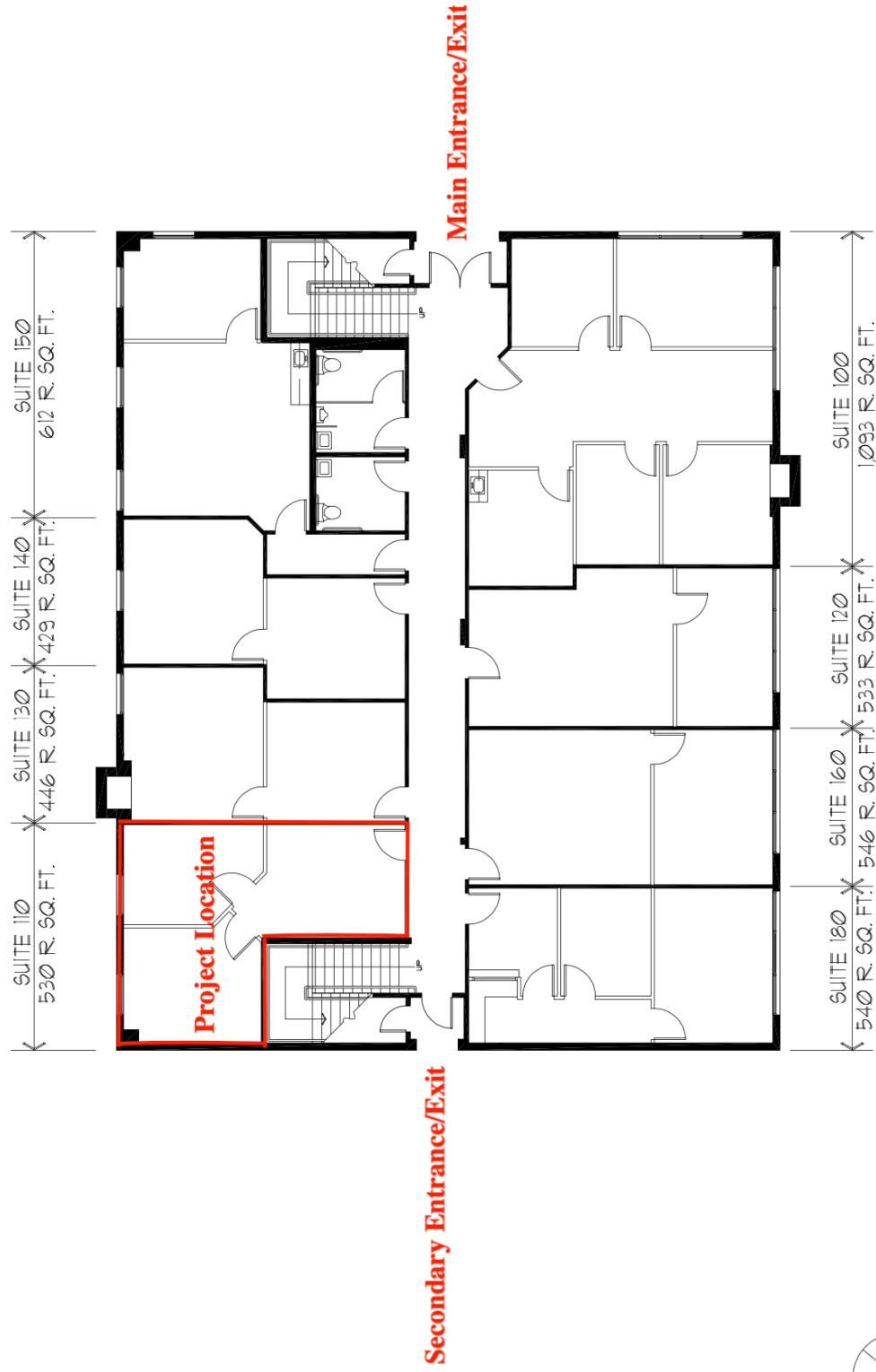
PROPOSED FLOOR PLAN

Tappan Investments (CA) LLC

SAKEZEN LLC

22772 Centre Drive, STE 110,
Lake Forest, CA 92630





Secondary Entrance/Exit

Main Entrance/Exit



SCALE: 1/16" = 1'-0"

CDL
DESIGN

INTERIOR ARCHITECTURE + SPACE PLANNING
9265 RESEARCH DRIVE
SUITE 200
CULDESIGNGROUP.COM

PLAN LAYOUT SUBJECT TO FIELD CONDITIONS. FIELD CONDITIONS MAY DIFFER FROM PLAN. AS SHOWN. ALL ROOM SIZES ARE APPROXIMATE. ALL INFORMATION REPRESENTED ON THIS DRAWING IS BELIEVED TO BE ACCURATE. HOWEVER, TENANT SHOULD VERIFY ALL PERTINENT INFORMATION PRIOR TO COMMITTING TO A LEASE. THIS PLAN IS NOT INTENDED FOR CONSTRUCTION PURPOSES. ANY FURNITURE OR FIXTURES REPRESENTED ON PLAN ARE TO BE PROVIDED BY TENANT AND ARE NOT INTENDED AS PART OF IT.

GROUND FLOOR

22772 CENTRE DRIVE
LAKE FOREST, CALIFORNIA
4,129 R. SQ. FT.
07/30/18